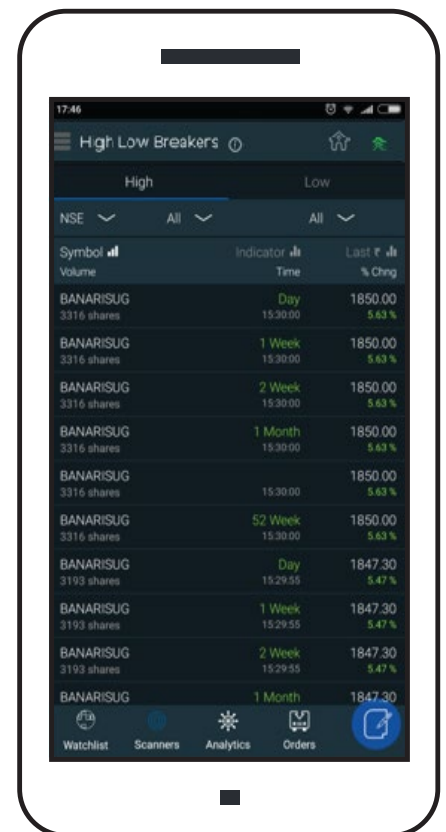
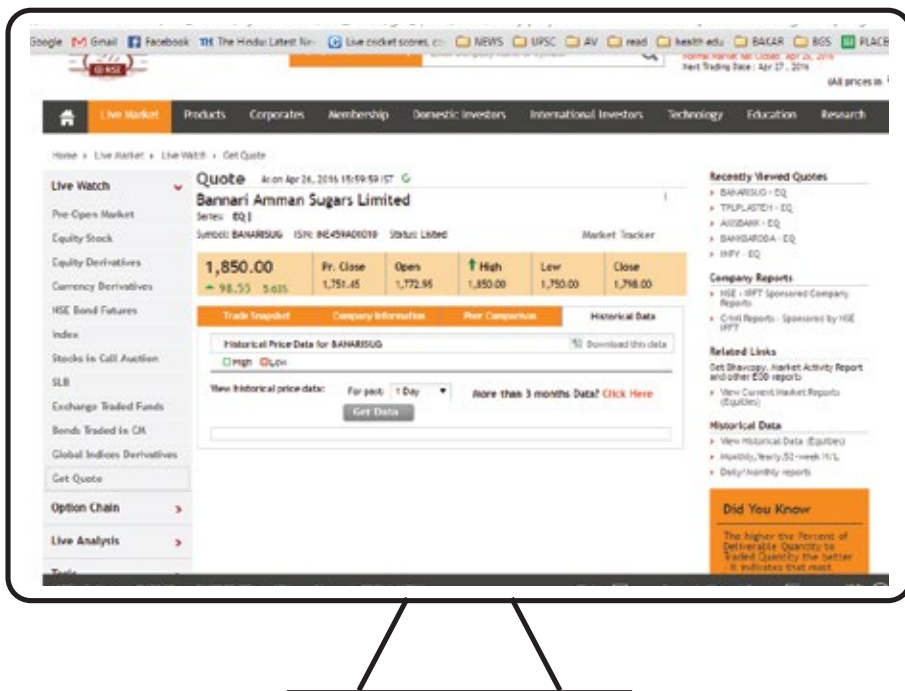
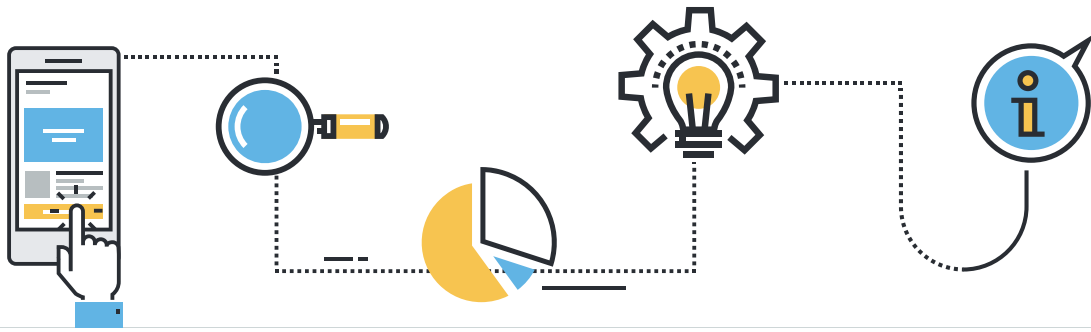


| Time Frame seggration | Capture of High and Low data | Comparison with Current market price | New Highs and Lows | Display |
|---|---|---|--|---|
| 52 Weeks 2 months 1 month 2 weeks 1 week Intra Day (i.e. one day) | Capture high and low price based on various time frames | Compare every tick with the captured data. If the change % is positive check if it is crossing the day high, 1 week high, 2 week high, 1 month high , 2 months high and lastly 52 week high. If the change % is negative check the above for lows | Throw out the result which is in the first priority i.e. if the price is positive and crossed 1 month high then it might have already crossed 1 week, 2 weeks high.. So we need to show the next level i.e. 1 month high Priority in order of importance 52 weeks, 2 months, 1 month, 2 weeks, 1 week, Intra Day | Time, Symbol, Exchange, Price, Volume, Alert 12:34:31, INFY, NSE, 1162, 102K, Crossed 1 month high |

BANARISUG (DAY)





TPL PLASTECH LIMITED (WEEK)

Quote for TPL Plastech Limited (NSE: TPLPLASTE) as on Apr 26, 2018 13:10:06 IST

| Pre Close | Open | High | Low | Close |
|-----------|--------|--------|--------|--------|
| 332.40 | 344.00 | 364.00 | 332.00 | 334.00 |

52 week high: 364.00 (26 APR 18)
52 week low: 312.40 (13 FEB 18)

| Buy Qty | Buy Price | Sell Price | Sell Qty |
|----------------------|-----------|------------|----------|
| 25 | 333.00 | 333.00 | 3 |
| 2 | 332.45 | 333.95 | 4 |
| 2 | 332.40 | 334.00 | 5 |
| 5 | 331.05 | 334.75 | 20 |
| 1 | 331.00 | 334.99 | 2 |
| 1,628 Total Quantity | | 3,586 | |

High Low Breakers

| Symbol | Volume | Indicator | Time | Last | % Chng |
|------------|--------------|-----------|----------|---------|--------|
| TPLPLASTEH | 10731 shares | 52 Week | 10:27:27 | 348.85 | 4.63 % |
| BLUESTARCO | 39204 shares | 52 Week | 10:27:10 | 442.00 | 2.33 % |
| BBL | 73528 shares | 52 Week | 10:26:40 | 1015.35 | 4.62 % |
| BBL | 73508 shares | 52 Week | 10:26:36 | 1015.00 | 4.59 % |
| BBL | 73303 shares | 52 Week | 10:25:48 | 1014.75 | 4.56 % |
| BLUESTARCO | 36963 shares | 52 Week | 10:24:59 | 441.50 | 2.21 % |
| BLUESTARCO | 34844 shares | 52 Week | 10:19:32 | 441.00 | 2.10 % |
| BBL | 67368 shares | 52 Week | 10:06:48 | 1014.70 | 4.55 % |