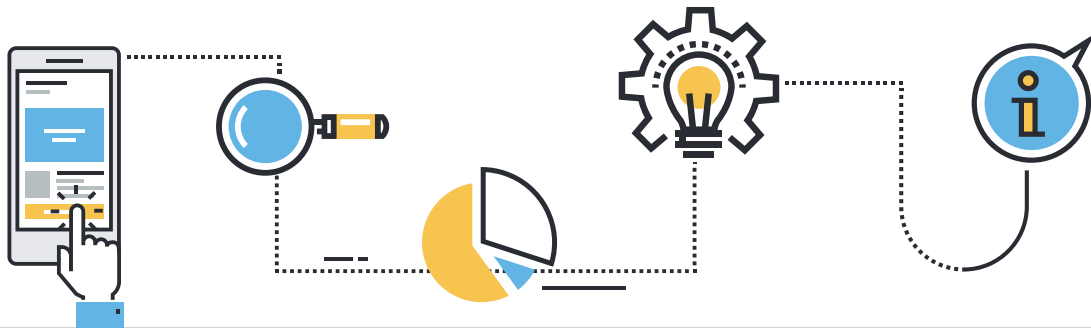


LONG BUILDUP

Open Interest as on last 2 days i.e. sys date - 2 trading day(A)	Open Interest as of Today eod (B)	% change (C)	Future price as on last 2 days (D)	Future price latest available bhav copy (E)	% change (F)	Condition
Open interest data underlying wise as of T-2 days	OI data based on today's bhav copy - i.e. latest available as on sys date/ Volume of T-4 %	$(B-A)/A * 100$	Future closing price as per bhav copy	closing price as on sys date - latest available bhav copy	$(E-D)/D * 10$	If C is positive and F is positive then sort based on C. Show top 10 in descending order

ICICI BANK

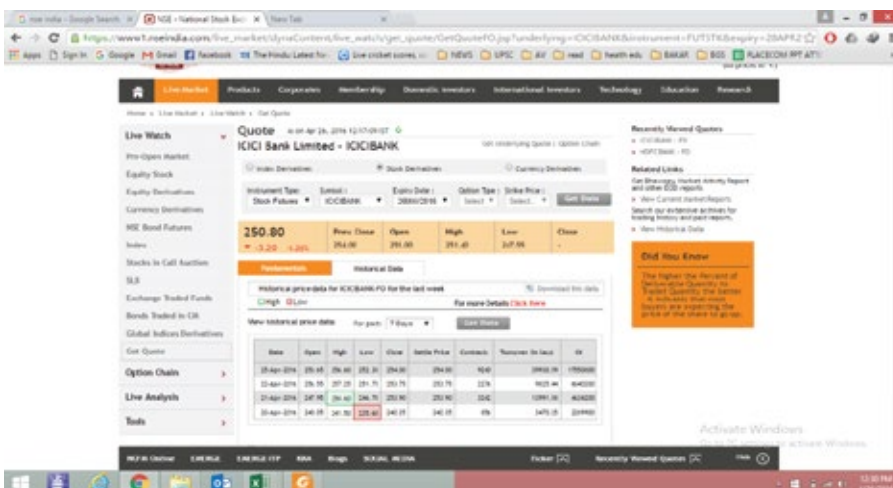
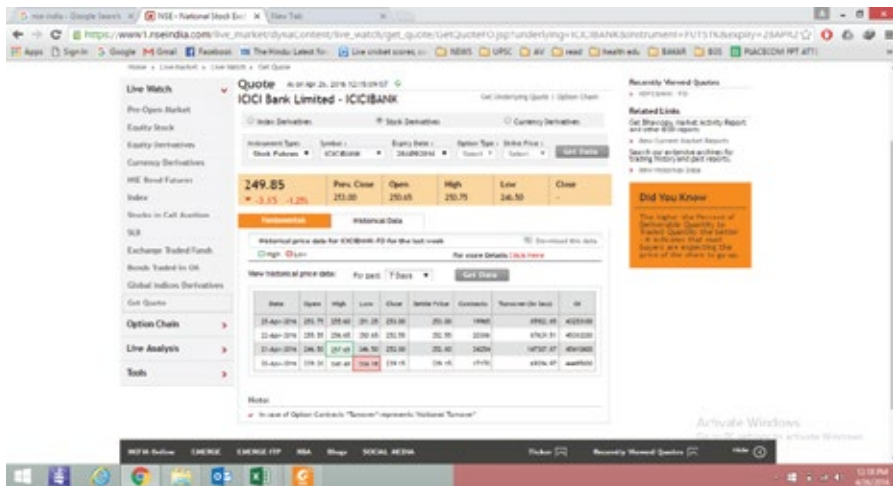
APRIL								
Date	Open	High	Low	Close	Settle Price	Contracts	Turnover (in lacs)	OI
25-Apr-16	253.75	255.6	251.25	253	253	19965	85922.85	43253100
22-Apr-16	255.55	256.65	250.65	252.55	252.55	20386	87639.51	45383200
21-Apr-16	246.5	257.65	246.5	252.8	252.8	34254	147307.87	45410400
MAY								
Date	Open	High	Low	Close	Settle Price	Contracts	Turnover (in lacs)	OI
25-Apr-16	253.65	256.6	252.3	254	254	9240	39930.59	17550800
22-Apr-16	256.55	257.25	251.75	253.75	253.75	2276	9825.44	6640200
21-Apr-16	247.95	258.6	246.7	253.9	253.9	3242	13991.88	4634200

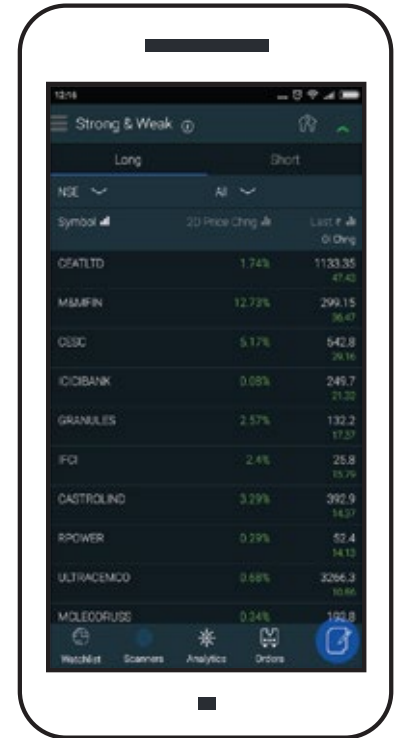
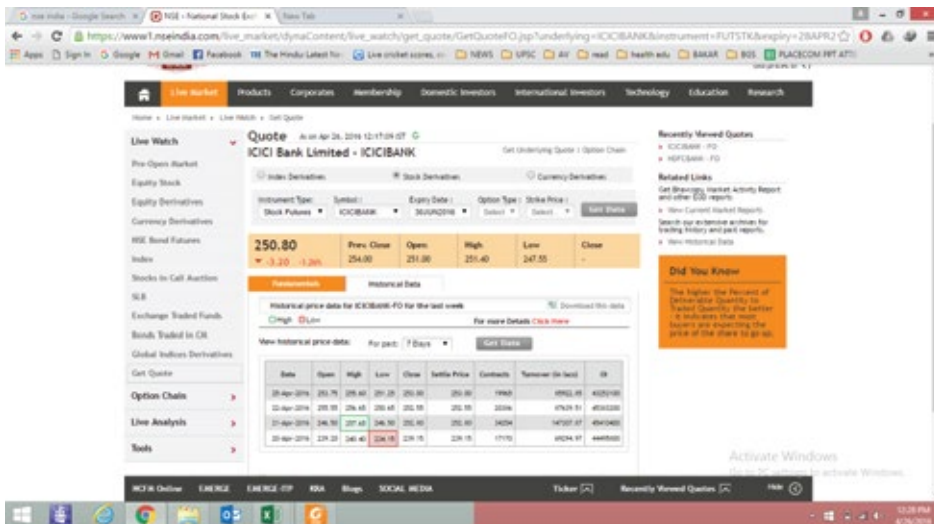
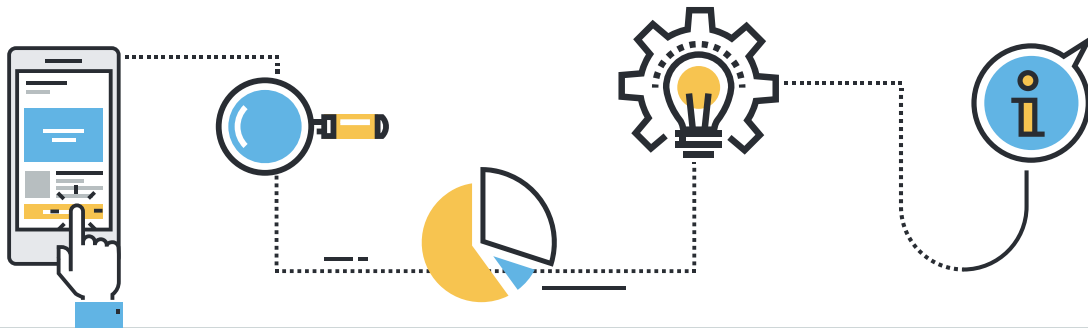


JUNE								
	Open	High	Low	Close	Settle Price	Contracts	Turnover (in lacs)	OI
	251.2	253.4	249.75	251.7	251.7	100	427.67	844900
	252	252.45	249.65	250.5	255.5	62	264.84	816000
	248.7	254	248.7	251.95	251.95	169	719.94	768400

2 days Price change of icici bank **0.08%**

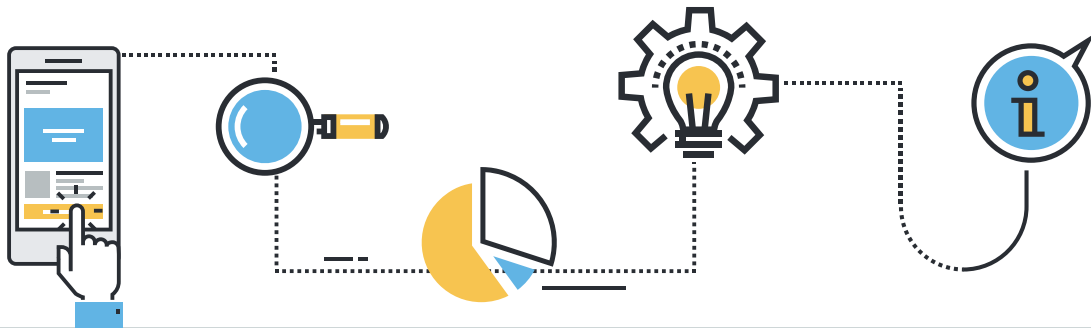
TOTAL	
25-Apr-16	61648800
22-Apr-16	52839400
21-Apr-16	50813000
OI Change	<b>21.32%</b>





SHORT BUILDUP

Open Interest as on last 2 days i.e. sys date - 2 trading day(A)	Open Interest as of Today eod (B)	% change (C)	Future price as on last 2 days (D)	Future price latest available bhav copy (E)	% change (F)	Condition
Open interest data underlying wise as of T-2 days	OI data based on today's bhav copy- i.e. latest available as on sys date	$(B-A)/A * 100$	Future closing price as per bhav copy	closing price as on sys date - latest available bhav copy	$(E-D)/D * 10$	If C is negative and F is negative then sort based on C. Show top 10 in descending order i.e. highest negative first



KPIT

APRIL								
Date	Open	High	Low	Close	Settle Price	Contracts	Turnover (in lacs)	OI
25-Apr-16	149.95	153.5	148.8	151.55	151.55	247	1492.53	1152000
22-Apr-16	155.25	155.25	149.05	150.15	150.15	160	972.64	1236000
21-Apr-16	155.1	157.8	153.55	154.65	154.65	194	1210.51	1344000
MAY								
Date	Open	High	Low	Close	Settle Price	Contracts	Turnover (in lacs)	OI
25-Apr-16	149.3	153.75	149.3	152.35	152.35	55	334.4	136000
22-Apr-16	152.65	153	152.55	152.75	151	5	30.54	64000
21-Apr-16	157.85	157.9	154.25	155.45	155.45	9	56.4	56000
JUNE								
Date	Open	High	Low	Close	Settle Price	Contracts	Turnover (in lacs)	OI
25-Apr-16	0	0	0	150.9	153.6	0	0	0
22-Apr-16	0	0	0	150.9	152.05	0	0	0
21-Apr-16	0	0	0	150.9	156.55	0	0	0

2 days Price change of KPIT

-2.00%

TOTAL

25-Apr-16	1288000
22-Apr-16	1300000
21-Apr-16	1400000
OI Change	-8.00%

